

## Installation of Front Boxu into front wall of MB/Setra



Date: 01.02.2016

Page 1 / 15

Molpir s.r.o. sídlo: SNP 129, 919 04 Smolenice; prevádzka: Hrachová 30, 821 05 Bratislava, Slovenská republika, Tel.: 00421 2 4319 1219, Fax: 00421 2 4319 1220, e-mail: obchod@molpir.com, www.molpir.com, www.shop.molpir.com

IČO: 31431372, IČpD: SK 2020391560, Tatra banka Bratislava, č. ú.: 2628020575/1100, register: OS Trnava, odd: Sro, vlož.: 1045/T

MOLPIR GROUP CZ a.s., Technologická 838/14, 779 00 Olomouc, Holice, Česká republika, Tel.: 00420 585 315 017, Fax: 00420 585 315 021, e-mail: molpir\_o@molpir.cz, www.molpir.cz

MOLPIR GROUP CZ a.s., Business centrum Klamovka, Plzeňská 155/113, 150 00 Praha 5 – Košíře, Tel.: 00420 724 606 000, e-mail: jsvoboda@molpir.cz, www.molpir.cz

IČO: 25828843, DIČ: CZ25828843, ČSOB Olomouc, č. ú.: 377913723/0300, Registrace: KOS, OR Ostrava, oddíl B, vložka č. 2094

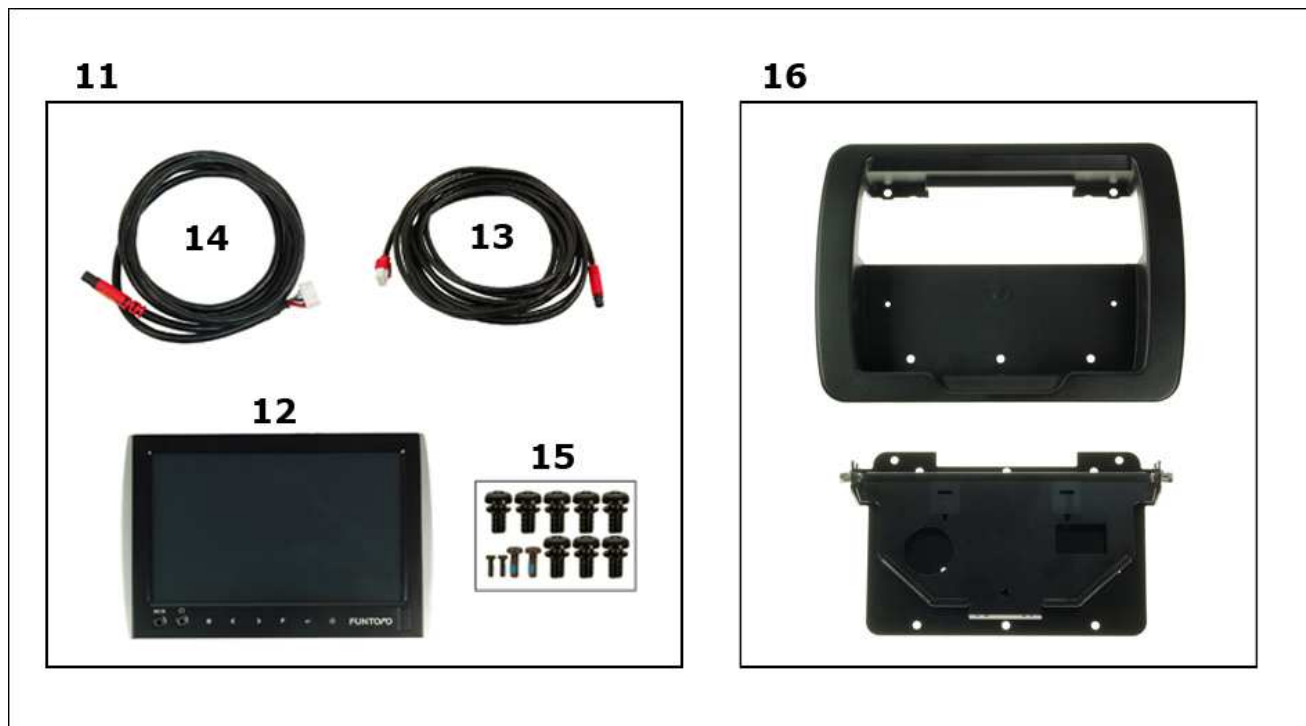
**Material required for installation:**



Pos.	Description	Code	Qty
1	Back plastic cover of monitor bracket FMS5723, with slot -grey	068986S1-M	2
2	Front plastic cover of monitor bracket FMS5723 - grey	068987S-M	2
3	Monitor Brackets for Front Box MB Setra 2010>	0190001	1
4	Side Cover of Bracket for Front Boxu MB Setra 2010>	0810307-M	1
5	Self - drilling screw 4,2x16mm Torx - black	104BN132744,2x16C	6
6	Half- knobb screw M4x8mm - imbus - black	104BN19M4x8C	1
7	Half- knobb screw M5x12mm - cross slot - black	105BN384M5x12C	10
8	Cylinder headed screw M8x30mm Torx - black	108BN4850M8x30C	1
9	Plastic protector D12,7mm/10,1mm disassemble	1926660	0,5
10	Bearing Ø8mm	108BN715M8	5
11	Monitor Bracket FMS5723 + hinge - stow-away60° for Front Box	FMS5723040-60-F	1
12	Magnet N38 - 28mmx23mmx8,0mm for monitor Funtoro	NH138	1



**Optional material for installation of monitor :**



Pos.1	Pos.2	Order code	Description	Qty
11		FMS5723-M	7" digital monitor with accesories	2
	12	FMS-MM5723	7" digital monitor	
	13	FMS-CA02-05000	Cable set connecting clutch-Hub; 5000mm; MegaLAN	
	14	FMS-CA04-01600	Cable set connecting monitor-clutch, 1600mm	
	15	FMS037-5723-01	Screws for installation of monitor	
16		FMS5723-HH-60	Monitor bracket with hinge	2

**Recommended material:**



Alkapren glue

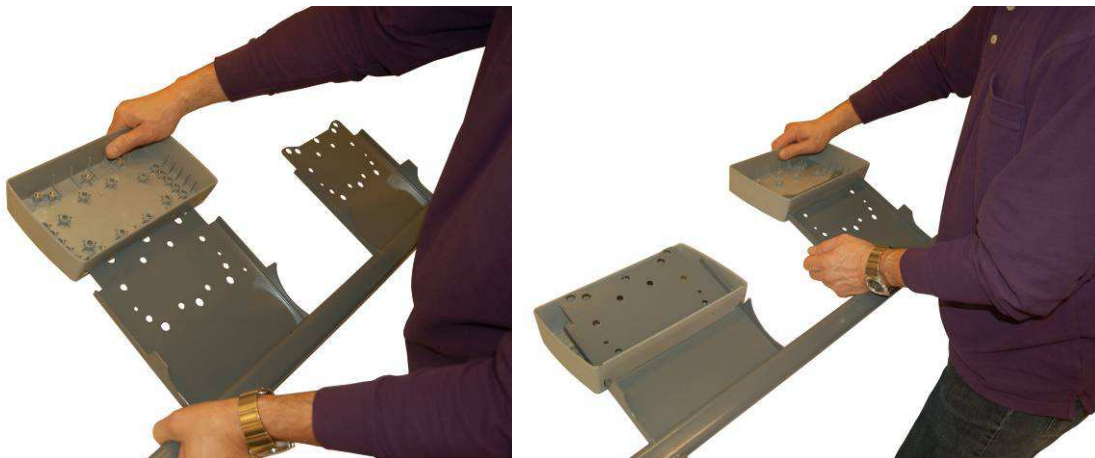


Brush

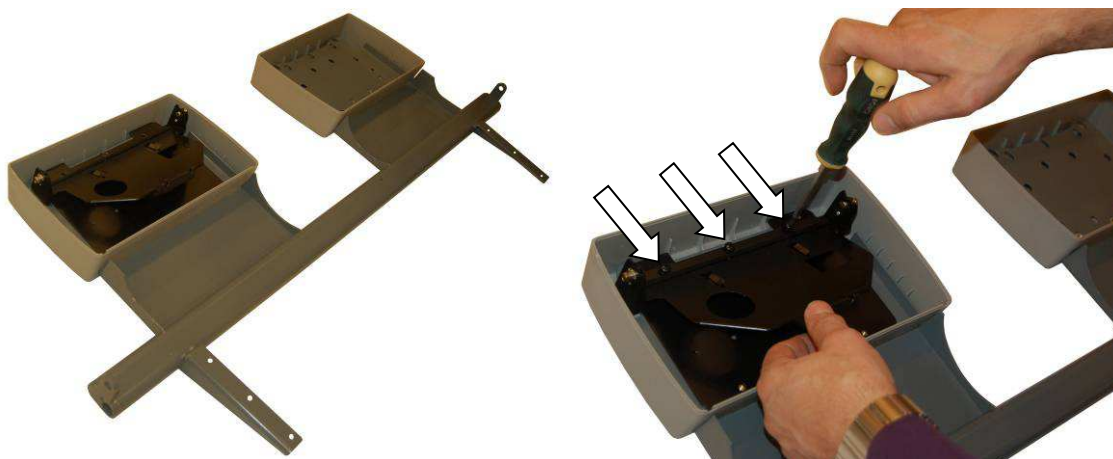




- 1 - Plastic Back Covers 068986S1-M slip on Monitor bracket 0190001



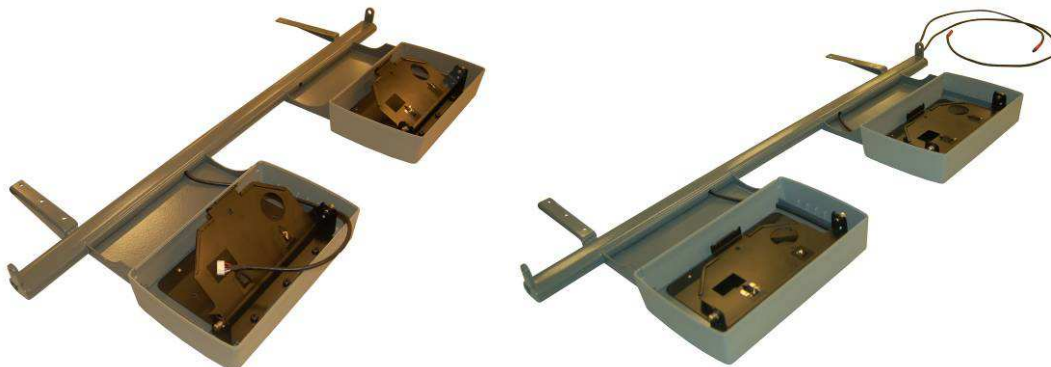
- 2 - Put inside hinge FMS5723-HH-60 and fasten it by 3 screws M5x10mm (from Monitor Set FMS037-5723-01)



- 3 - Do the same in second Plastic Back cover.



- 4 - You have to decide, in which side will go cables (FMS-CA02-05000) from monitors. Then we push cables starting from monitor side through mounting holes to the outlet hole – first do the cable, which is longer.



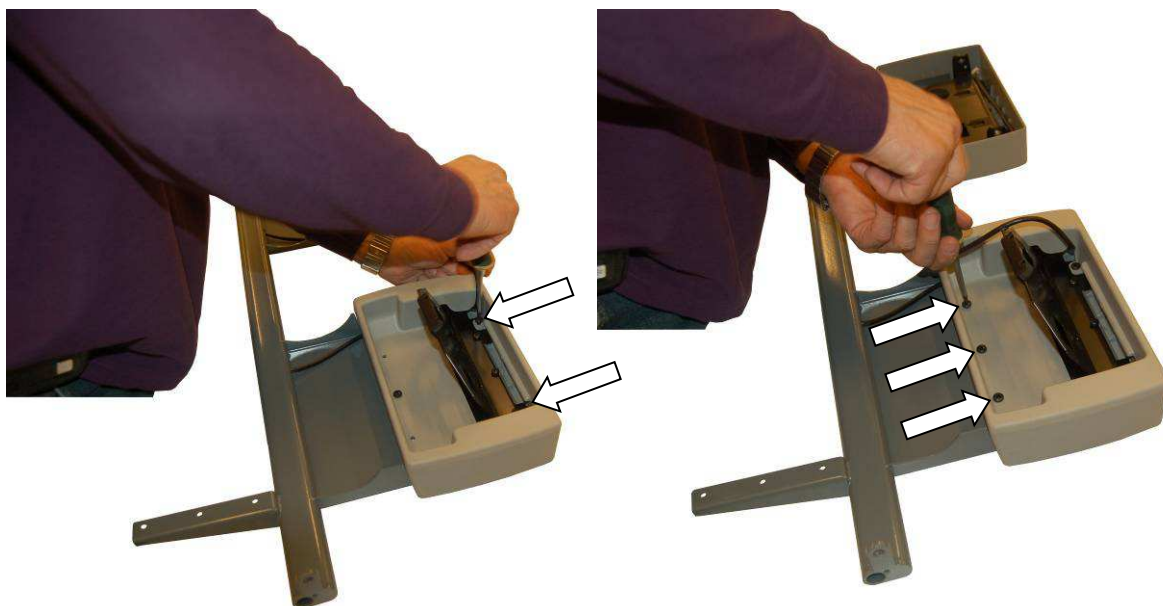
- 5 - Fasten monitor cables in bracket according picture, to make them ready for mounting. It means enough space and length to be connected with monitor.



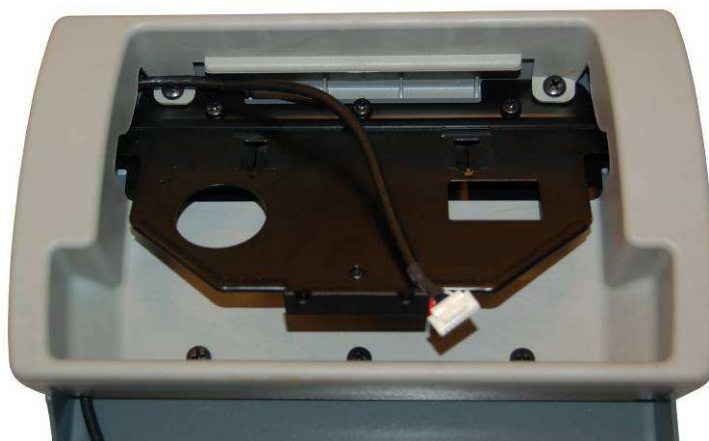
- 6 - Stow-away the hinge and slip over Plastic Front cover 068987S-M



- 7 - Tight Plastic Front Cover 068987S-M with 5 screws M5x12mm (105BN384M5x12C) according pictures. Do the same with second bracket



- 8 - Box with cabel set is ready for monitor mounting





- 9 - Push cable connector into monitor socket (on back panel of monitor), till it sounds „click”. In this case only is secured ideal contact without risk of future´s disconnection.



- 10 - Place cable into slot on back panel of monitor



- 11 - Place monitor into hinge, push up this way, that gripping on back side of monitor will slip in hinge holes. Then press monitor to the hinge and move down, so the monitor's back gripping will stay anchored in holes of hinge.



- 12 - Secure monitor with screws M2x5,5mm (from monitor set FMS037-5723-01) from back side, so it cannot drop out.





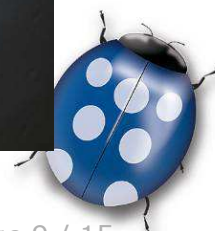
13 - Cabel duct 1926660 insert partly in hole and apply on cabels .



14 - Set is ready to be mounted in Front wall



15 - On the right side of the Front wall loosen and take out screw M8x20mm together with distance cylinder



Date: 01.02.2016

Page 9 / 15

Molpir s.r.o. sídlo: SNP 129, 919 04 Smolenice; prevádzka: Hrachová 30, 821 05 Bratislava, Slovenská republika, Tel.: 00421 2 4319 1219, Fax: 00421 2 4319 1220, e-mail: obchod@molpir.com, www.molpir.com, www.shop.molpir.com

IČO: 31431372, IČpD: SK 2020391560, Tatra banka Bratislava, č. ú.: 2628020575/1100, register: OS Trnava, odd: Sro, vlož.: 1045/T

MOLPIR GROUP CZ a.s., Technologická 838/14, 779 00 Olomouc, Holiče, Česká republika, Tel.: 00420 585 315 017, Fax: 00420 585 315 021, e-mail: molpir\_o@molpir.cz, www.molpir.cz

MOLPIR GROUP CZ a.s., Business centrum Klamovka, Plzeňská 155/113, 150 00 Praha 5 – Košíře, Tel.: 00420 724 606 000, e-mail: jsvoboda@molpir.cz, www.molpir.cz

IČO: 25828843, DIČ: CZ25828843, ČSOB Olomouc, č. ú.: 377913723/0300, Registrace: KOS, OR Ostrava, oddíl B, vložka č. 2094

16 - On the left side of Front wall loosen and take out screw, distance cylinder and also additional original bracket.



17 - Loosen all original screws, to demount original padding.



18 - On the dismantled padding, glue-off right and left top corners, according picture



19 - Cutt off from top corners of board plate 3mm x 10mm by Plate shears



20 - Take out both top corners

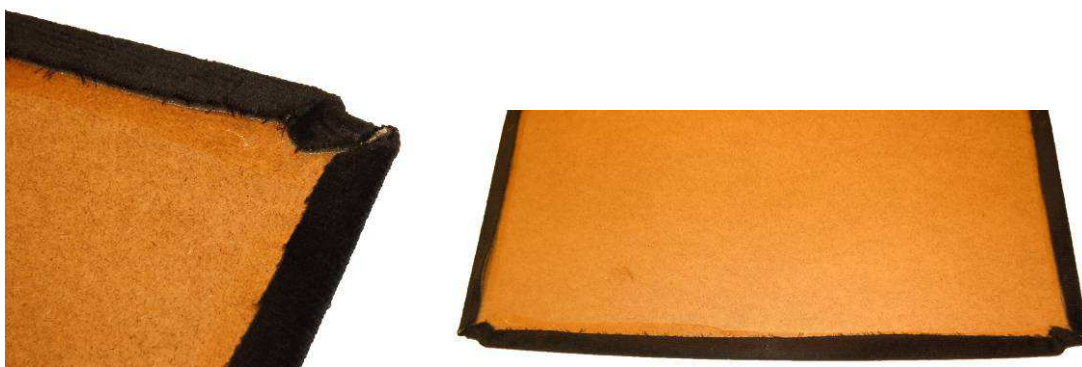


21 - After finishing of board glue board with brush and tight padding back





22 - Fasten both top corners



23 - Cutt off plastic foam untill steel frame on the both sides of Front Wall,. Make slot up to the mark settled by screw hole.



24 - Make slot by knife and take out plastic foam. Make space for next mounting monitor´s bracket.



- 25 - Prepare original screw with original additional bracket. On the original screw M8x20mm slip necessary amount of bearings Ø8mm (108BN715M8) 1~5pcs (depends on height of PUR foam in the twist place).



- 26 - Attach ready box FMS037-2FB02MB to the Front Wall and tighten it well together with additional bracket by screw M8x20mm on side , where is cabel ´s duct output.



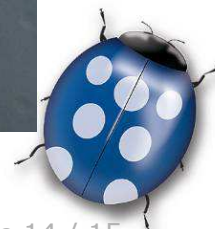
27 - Tighten well by screw M8x30C (108BN4850) also on side, where are no cables.



28 - Put on plastic cover 0810307-M, tight by screw 104BN19M4x8C



29 - Drill 3 holes Ø3,5mm diameter on each side, through holes of bracket.







- 30 - Attach adjusted padding of Front Wall back same way, tight by original screws into original holes.  
Tight Monitor bracket by 3 screws 104BN132744,2x16C on each side

