



Life Style in **Vehicle**

5F.,No.99, Lide St., Jhonghe City, Taipei County, Taiwan
TEL:886-2-32341359 FAX:886-2-32349617

Application Notice

The Announcement of 60 Serial Holder-Hinge

Rev.	Date	Author(s)	CHECK BY	Note
1.0	2010/4/29	FC Tu	Johnson Chou	

1. GENERAL DESCRIPTION2

2. SPECIFICATION2

3. ADVANTAGE.....5

4. INSTALLATION GUIDE7



1. General Description

FUNTORO released 60 Serial Holder-Hinge (For 7" monitor) that purpose for easy installation and enhance structure strength. There are two degrees of hinge can be offered, 45 and 60 degree.

This document will present the advantage and installation method.

2. Specification

2.1. Package.



Figure 1, the package of Holder-Hinge.

2.2. Hinge Profile.

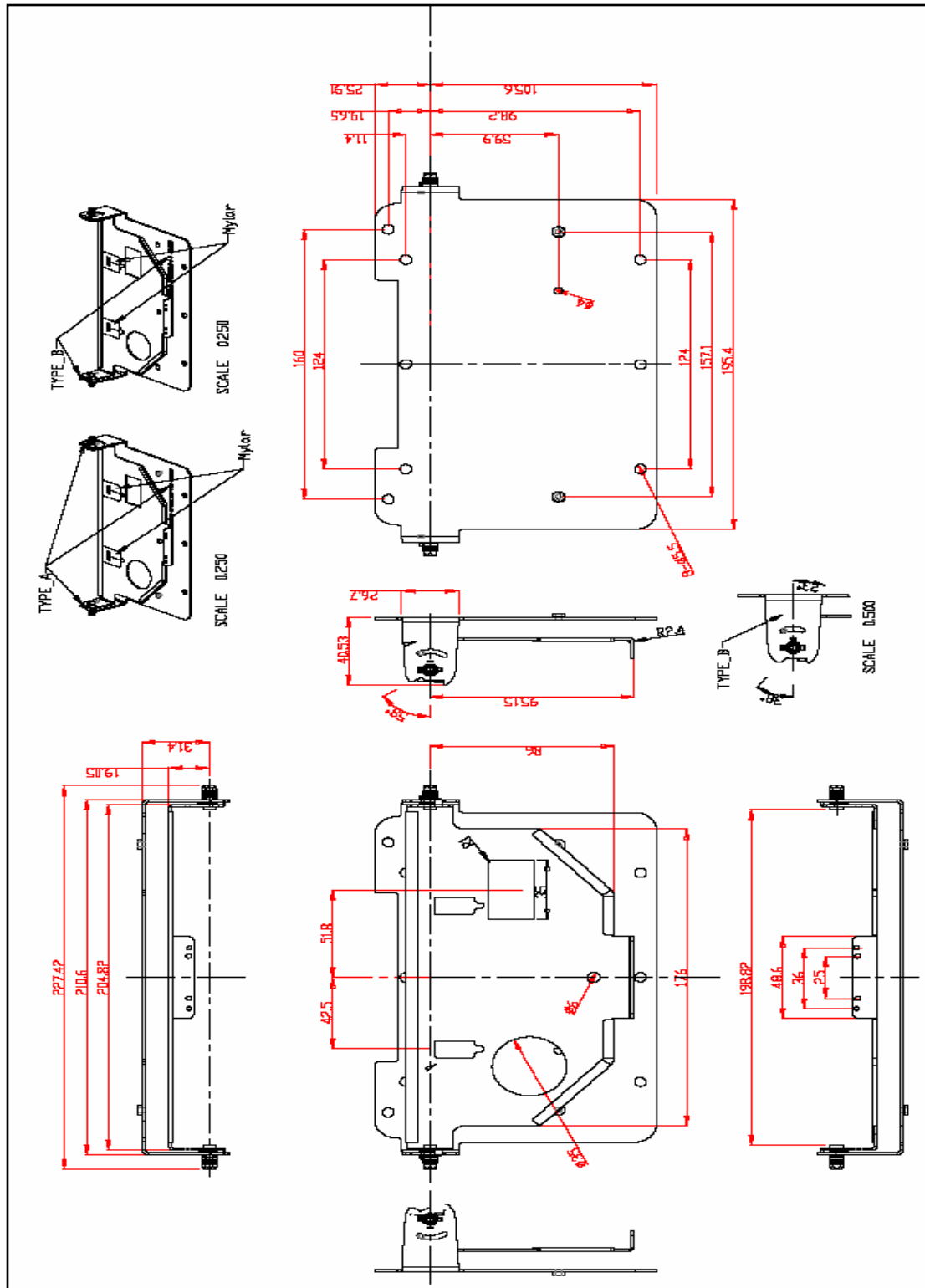


Figure 2, 45/60 degree hinge diagram.



2.3. Holder Profile.

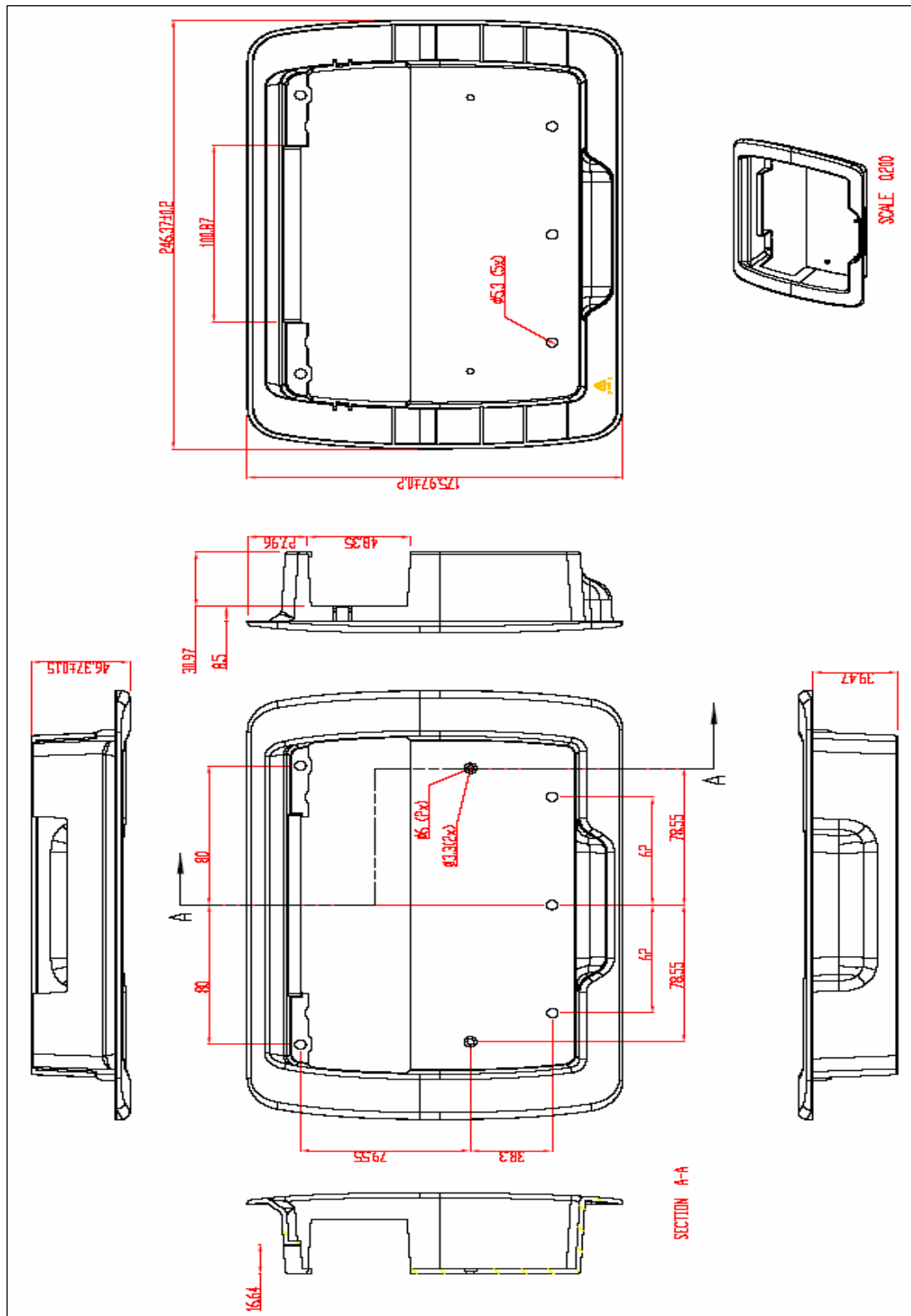


Figure 3, holder diagram.



3. Advantages

This version did a lot of enhancement to improve the installation and structure strength, and we compared it with previous version (45 Serial), list the advantages below.

3.1. The advantages of 60 Serial Hinge.

We mark the advantages on Figure 4, and go through in detail as below:

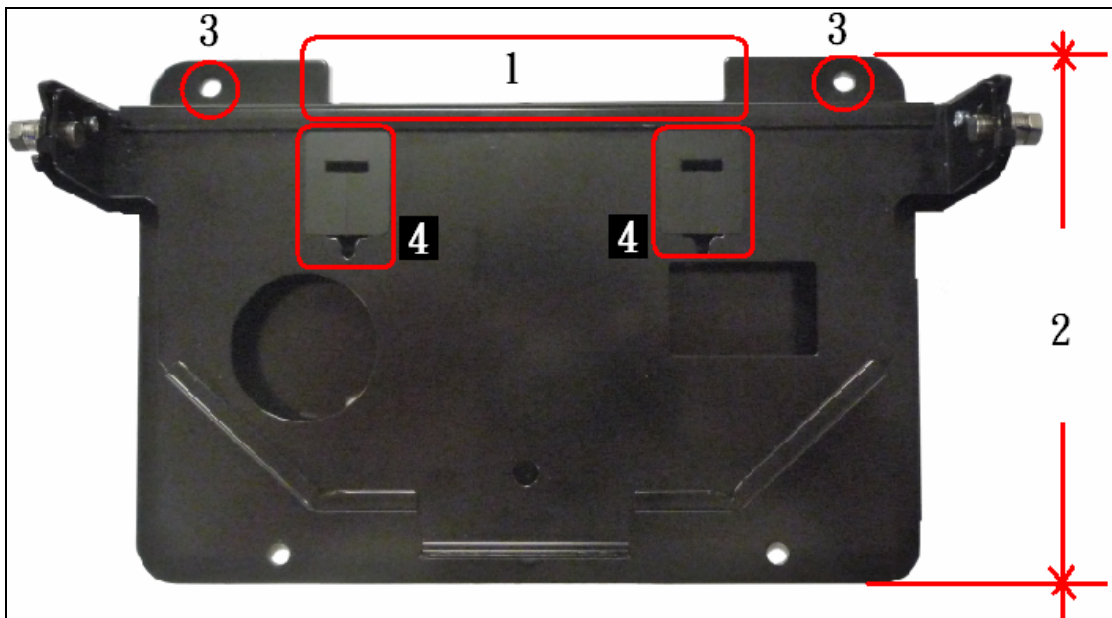


Figure 4, the advantages of 60 Serial Hinge.

- **Advantage 1**, for easy to arrange monitor cables, we cut an indentation on top of hinge, it can reserve enough space for cabling.
- **Advantage 2**, the width is shorter than S45 up to 25mm, it can increase the range that holder edge cover the sponge, it's good looking for holder border with seat and more strength.
- **Advantage 3**, on top left and right corner, we created a screw hole to fix seat-hinge-holder, it can prevent holder frame variant by sponge bounce.

- **Advantage 4**, stuck a Mylar on hook slot as buffering between hinge and monitor hooker, it can avoid noise and protect monitor hooker when vibration.

3.2. The advantages of 60 Serial Holder.

We mark the advantages on Figure 4, and go through in detail as below:

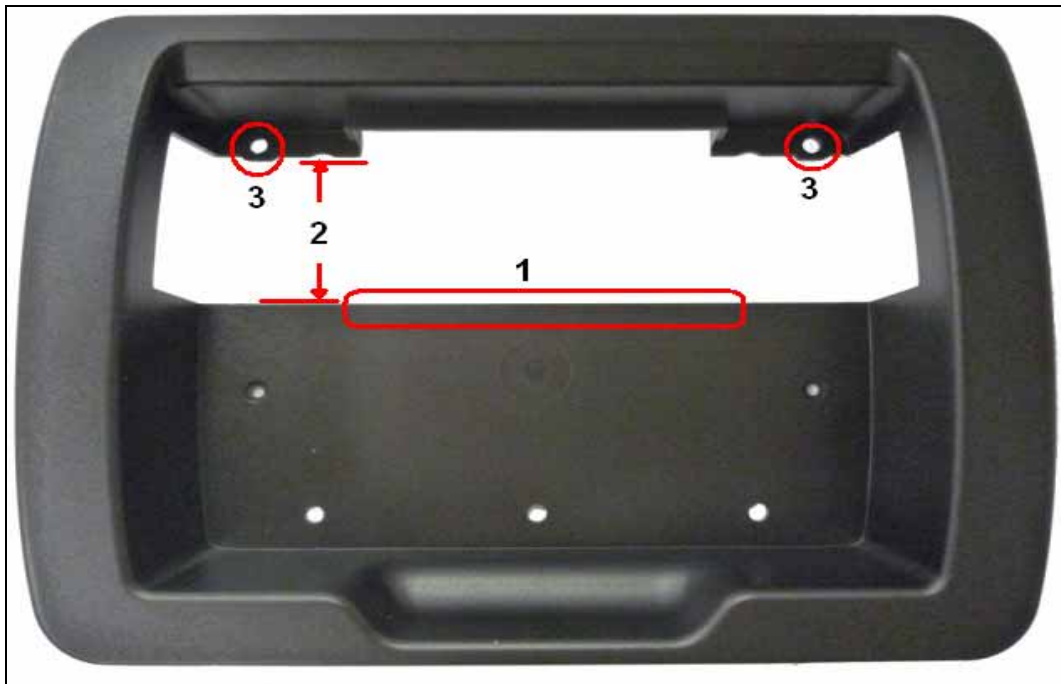


Figure 5, the advantages of 60 Serial Holder.

- **Advantage 1**, fixed the problem that interference with monitor hooker, the problem made noise when monitor rotated.
- **Advantage 2**, enlarge the monitor through hole to make monitor easy installation.
- **Advantage 3**, on top left and right corner, we created a screw hole to fix seat-hinge-holder, it can prevent holder frame variant by sponge bounce.

4. Installation Guide

Step 1: Fit hinge to the seat by screwed quantity 3 pcs (M5 x 10mm) in red mark.

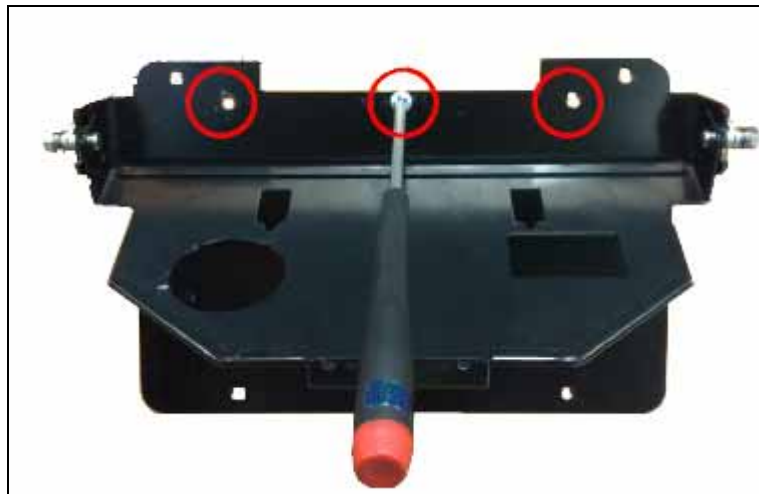


Figure 6, fit hinge on seat.

Step 2: Monitor cabling.

- (1). Plug POE cable to monitor.
- (2). Put the cable into groove.
- (3). Stick tape to fit cable in groove.

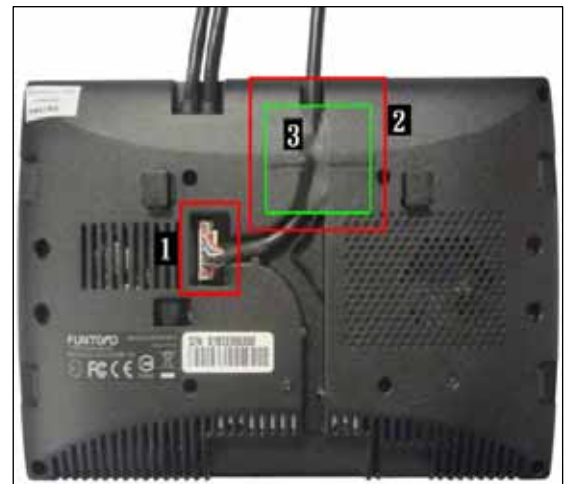


Figure 7, monitor cabling step.

Step 3: Fit monitor on hinge.

(1). Hook the monitor into T-slot of hinge.

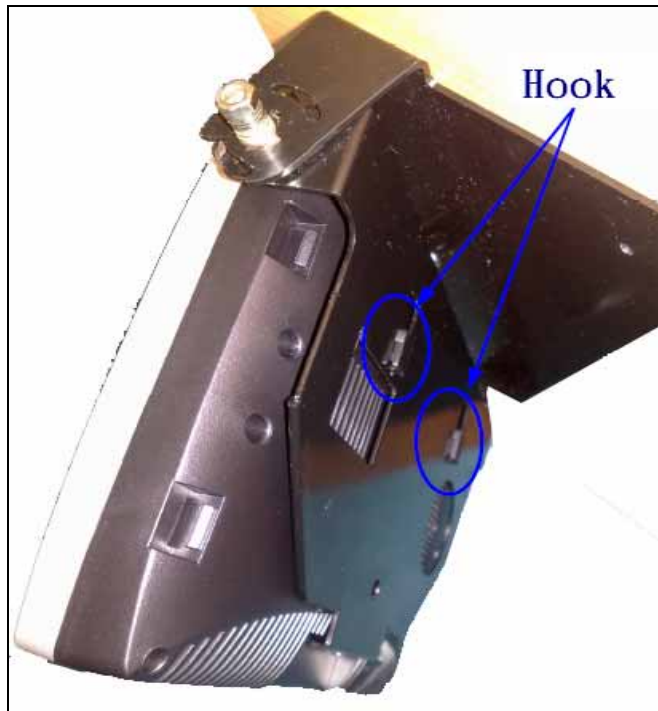


Figure 8, hook monitor to hinge.

(2). Screw quantity 2pcs (M2 x 6mm) to fit monitor.

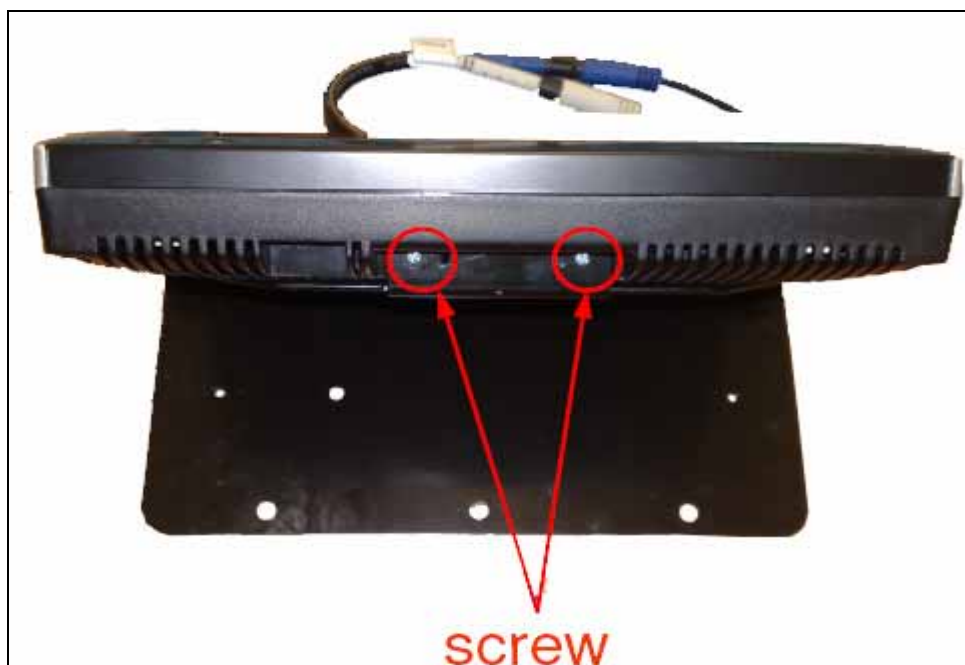


Figure 9, screw to fit monitor on hinge.

**Step 4: Connect AUX-IN and SPK-OUT cable if necessary.
Please tape the joint to firm the connection.**



Figure 10, AUX-IN and SPK-OUT connection.

Step 5: Holder Assembly.

- (1). Pull up monitor to 45° ~ 60° degree.
- (2). Assemble the holder to hinge through the hole of holder.



Figure 11, assemble holder.

Step 6: Fit holder by screws, there are 5 screws (M5 x 10 mm) need to apply.



Figure 12, fit holder by screws.